

Access Controller Deployment Guide

V2.00



Zhejiang Uniview Technologies Co., Ltd.

Revision History

Date	Version	Description	Author
2019-10-12	1.00	Chinese edition	Kaiwen WANG
2022-09-29	2.00	Translate into English	lingfeng JIN

NOTE!

- The main updates are in purple.

Contents

UNV Access Controller Scheme.....	4
1 Brief Introduction.....	4
1.1 Scheme Components.....	4
1.2 Networking Diagram.....	5
1.3 Wiring Diagram.....	5
1.4 EZAccess Version and Driver.....	7
1.5 Deployment Preparation.....	7
2 Software Requirements.....	8
2.1 PC and software.....	8
2.2 EZAccess Configuration.....	8
2.3 Pass-Thru Records.....	13

UNV Access Controller Scheme

1 Brief Introduction

1.1 Scheme Components

The scheme mainly consists of three parts: access controller software (EZAccess), ER-SRX2 series access controllers and card readers, and PC and card issuers.

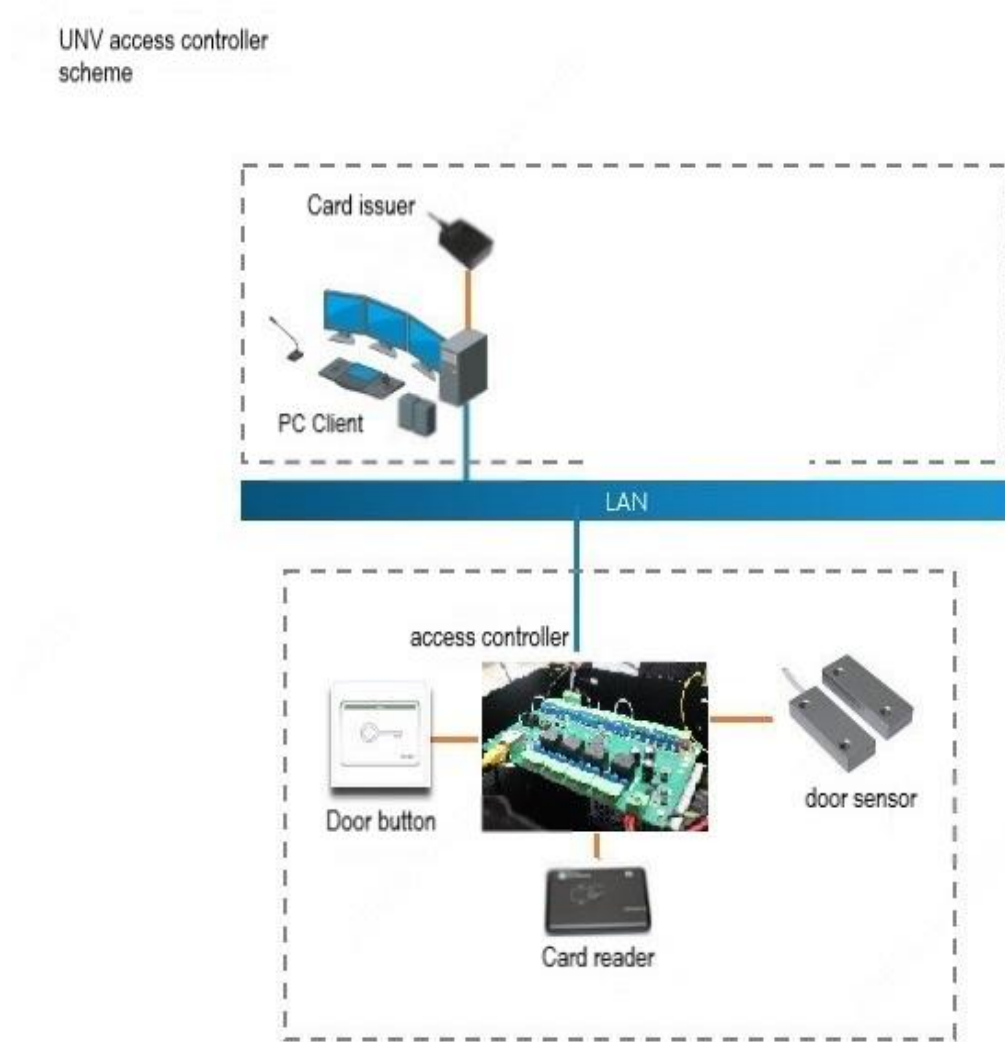
Device	Model
EZAccess software	Version: EZAccess_Win64-R1123.1.15.1_doorController_02
Access controller	ER-SR12, ER-SR22, ER-SR42
IC card reader	EC-R1H-M
IC card reader (with keypad)	EC-R2H-MK
Multifunctional card issuer	EC-W1D-EMC

1. EZAccess is mainly used for access controller management, personnel management, visitor management, access control, etc. Users can add persons on EZAccess, assign access cards including card passwords, assign door access permissions, and configure door opening methods. Users can view door opening events on EZAccess. EZAccess must be installed on a computer plugged with a card issuer and installed with the corresponding driver.
2. The access controller is mainly used for access control. The access controller can control access when connected to magnetic locks and card readers. The controller sends door unlock events to EZAccess. If there's a door magnetic sensor on the magnetic lock, the controller will generate another set of

unlock and lock events. Without the sensor only unlock events can be generated.

1.2 Networking Diagram

Figure 1 The networking diagram



1.3 Wiring Diagram

Figure 2 Wiring the card reader

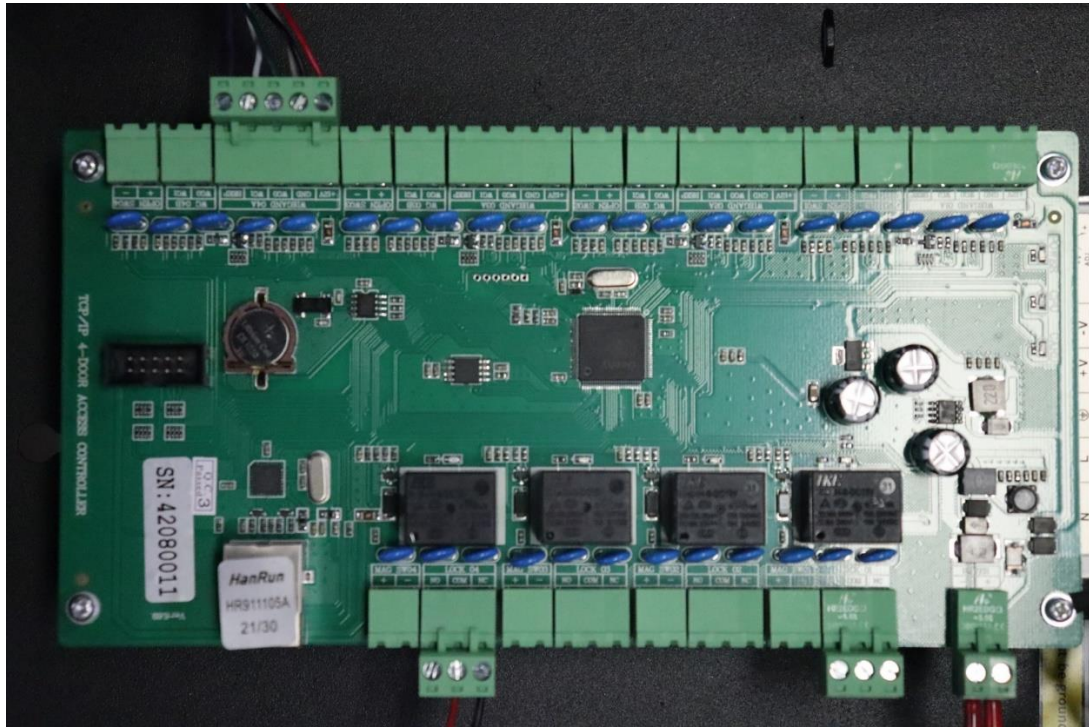


Figure 3 Wiring the door lock

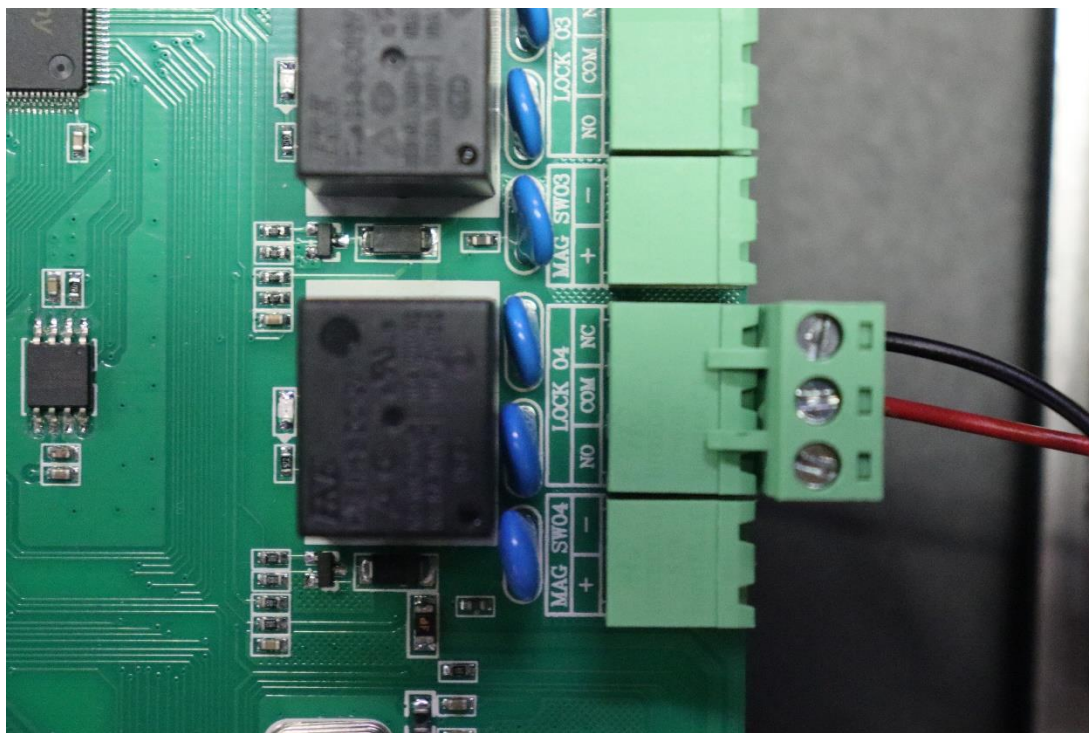
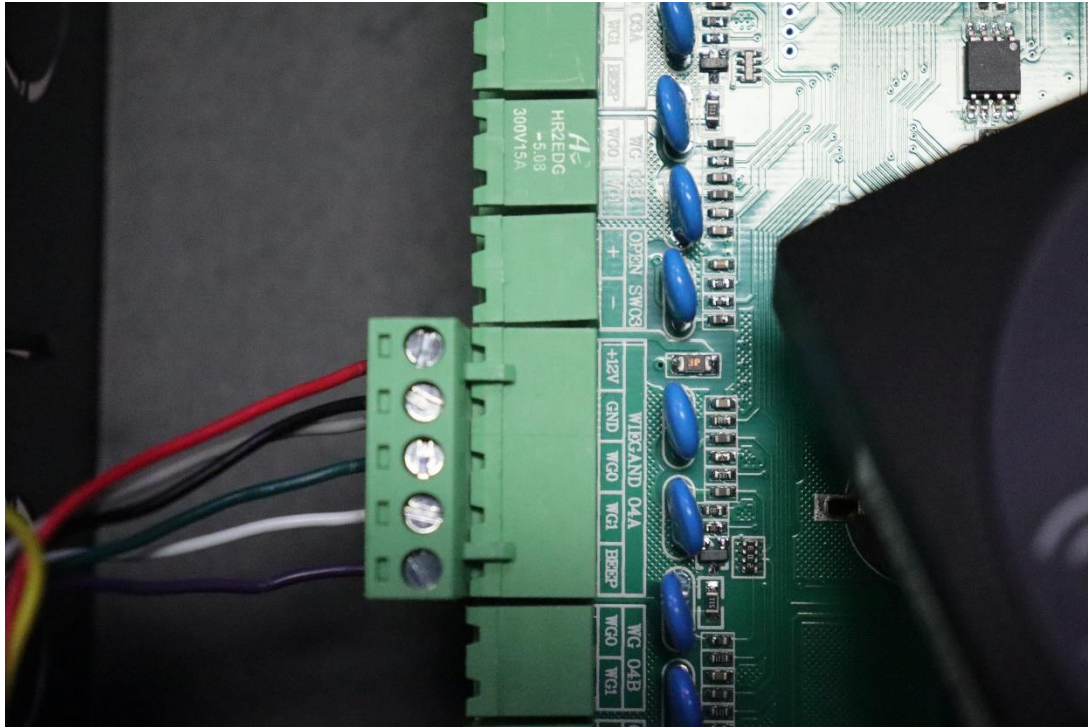


Figure 4 Wiring the card reader



Detailed wiring diagrams



one door.pdf



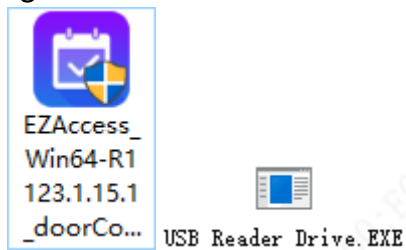
two doors.pdf



four doors.pdf

1.4 EZAccess Version and Driver

Figure 5 EZAccess Version and Driver



1.5 Deployment Preparation

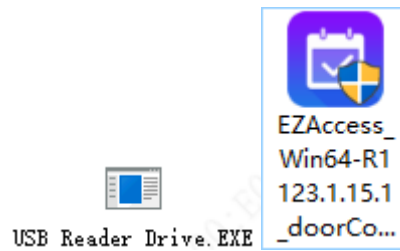
Currently unavailable.

2 Software Requirements

2.1 PC and software

1. Plug the EC-W1D-EMC card issuer into the computer, install the driver. The indicator on the card issuer is steady red. Download the EZAccess software package from Uniview official website and complete installation.

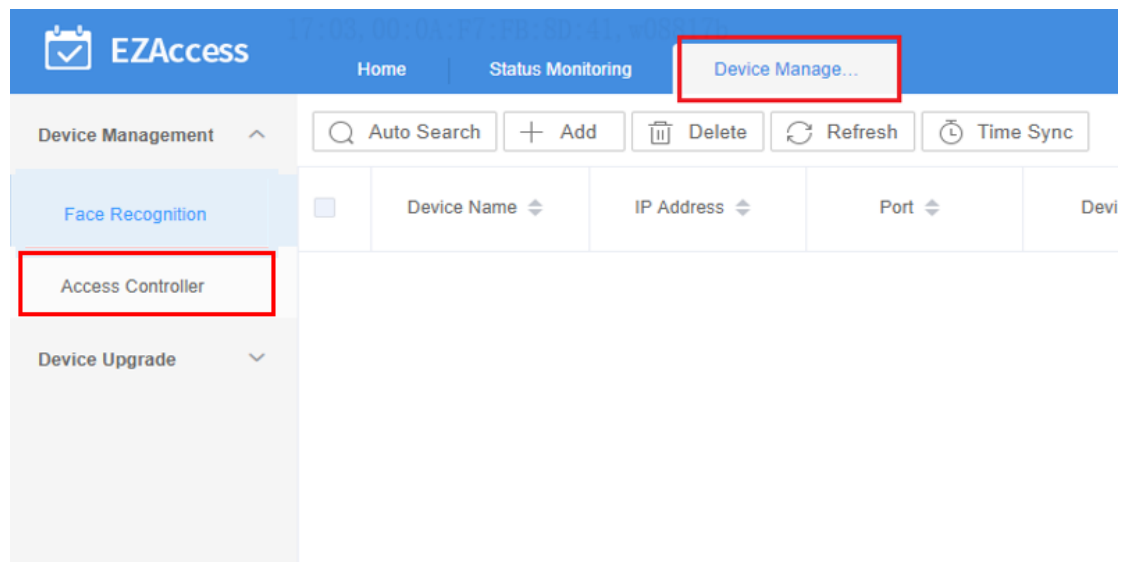
Figure 6 EZAccess Version and Driver



2.2 EZAccess Configuration

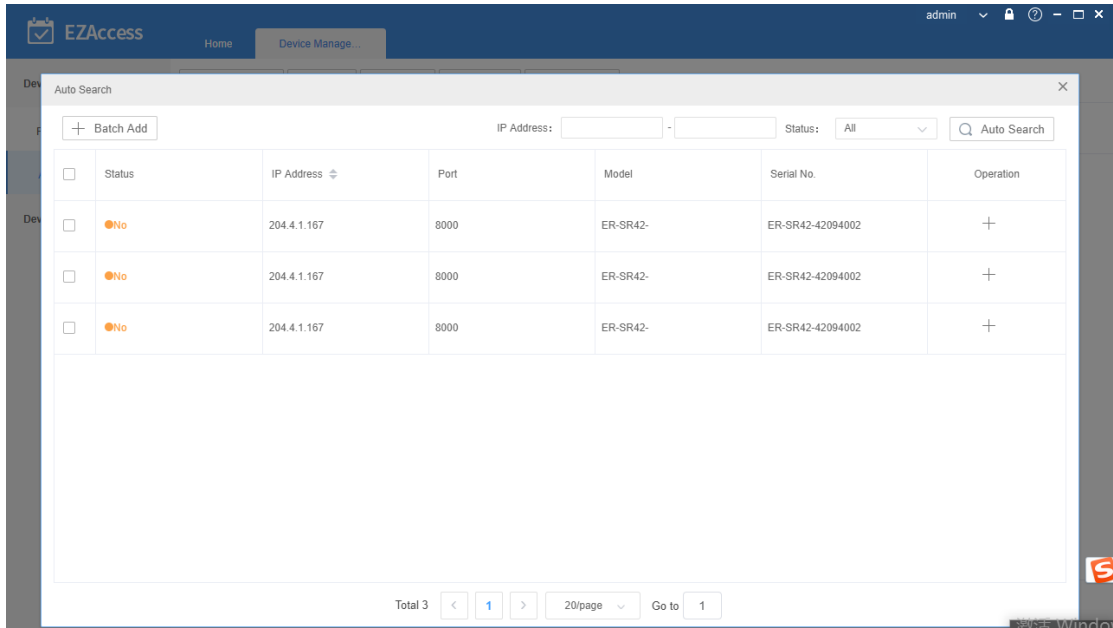
1. Add device
Create EZAccess user > Log in to EZAccess > Device Management > Access Controller.

Figure 7 Device Management



Click **Auto Search**. The **Auto Search** window appears. Choose the desired access controller and then click **Add**.

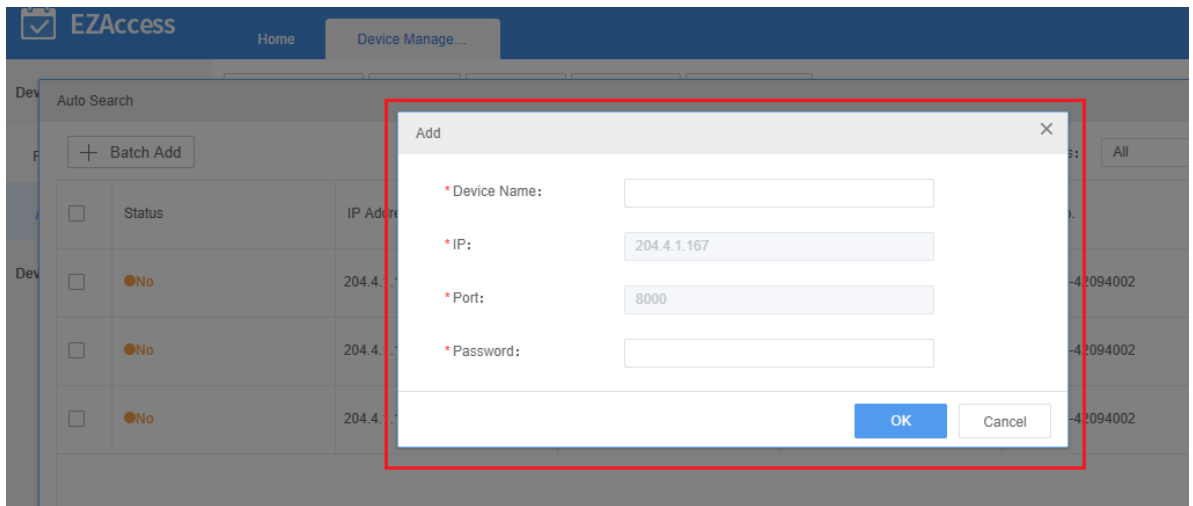
Figure 8 Auto Search



In the **Add** window, enter the device name and password, click **OK**. The access controller is added successfully.

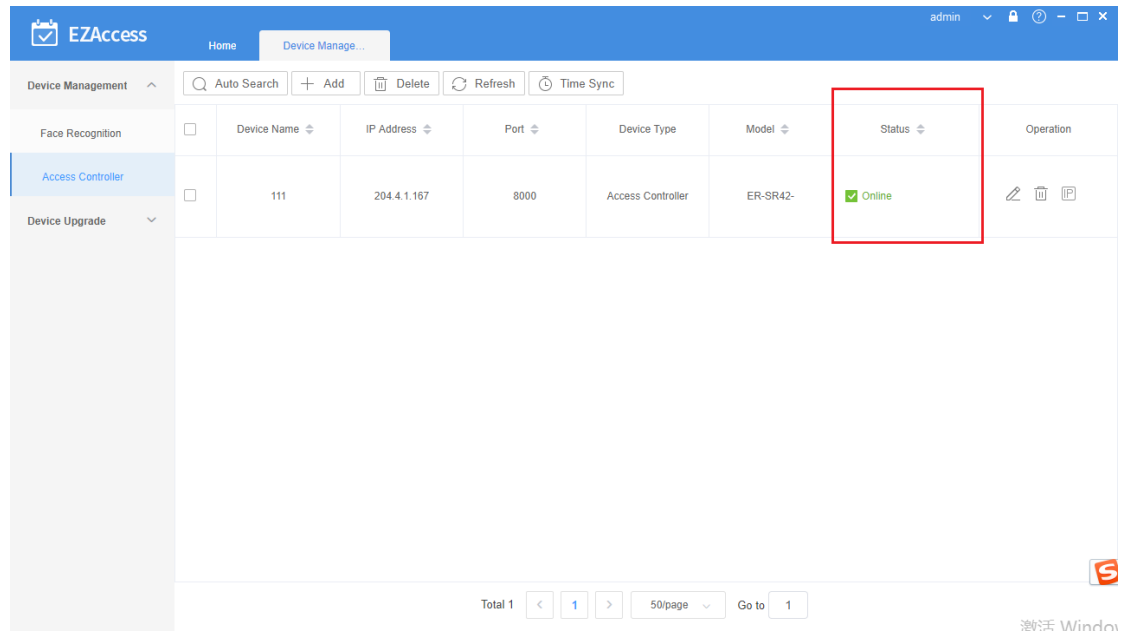
Note: **FFFFFFFF** is the initial password for all access controllers.

Figure 9 Add Device



The successfully added access controller shows the “online” status.

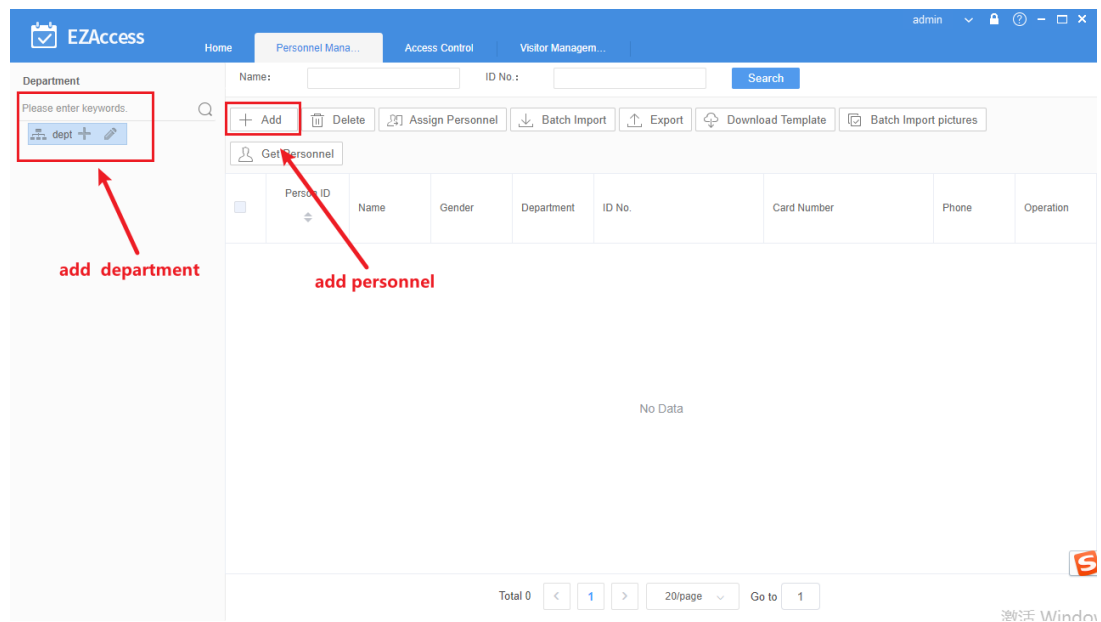
Figure 10 Status



2. Add person

On the page as shown below, add departments on the left-side tree. Click **Add** on the right to add persons; or import a department and then import persons.

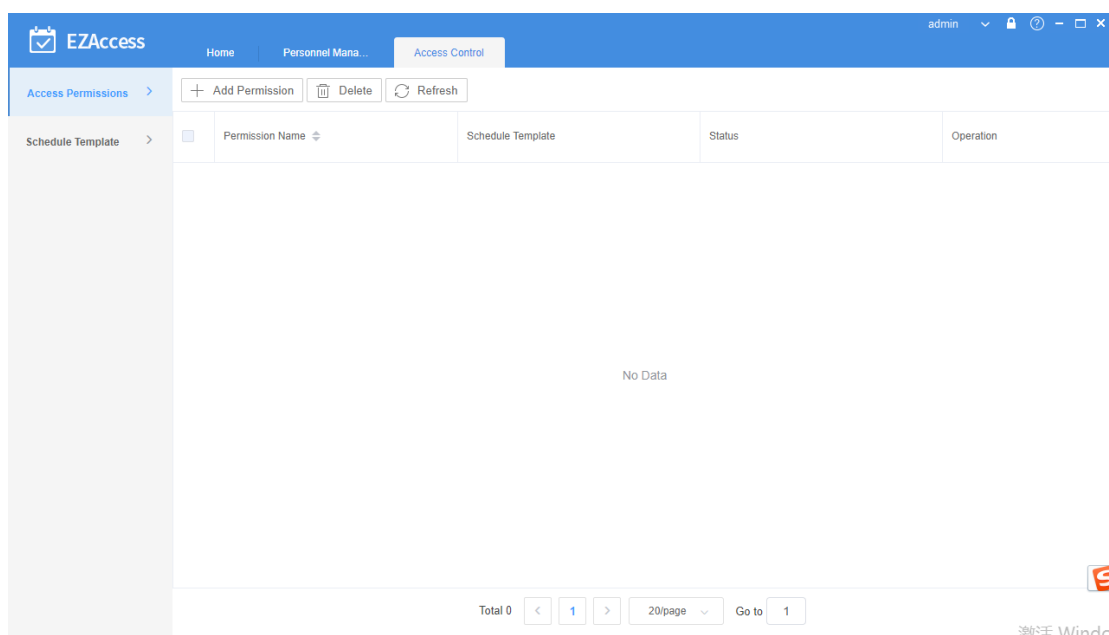
Figure 11 Add Person



3. Configure doors

After all the persons are configured, go to **Access Control > Access Permissions**. After an access controller is added, the doors under it are added automatically. There's no need to add doors manually. Now you only need to assign permissions.

Figure 12 Assign Permissions



4. Add card passwords

On the page as shown below, the upper half part shows person info, and the lower half part shows card info. Choose the serial port connected with the card issuer, click **Read**. Put the card on the EC-W1D-EMC card issuer. A card number is generated in the card number column, click **OK**. The card number becomes effective.

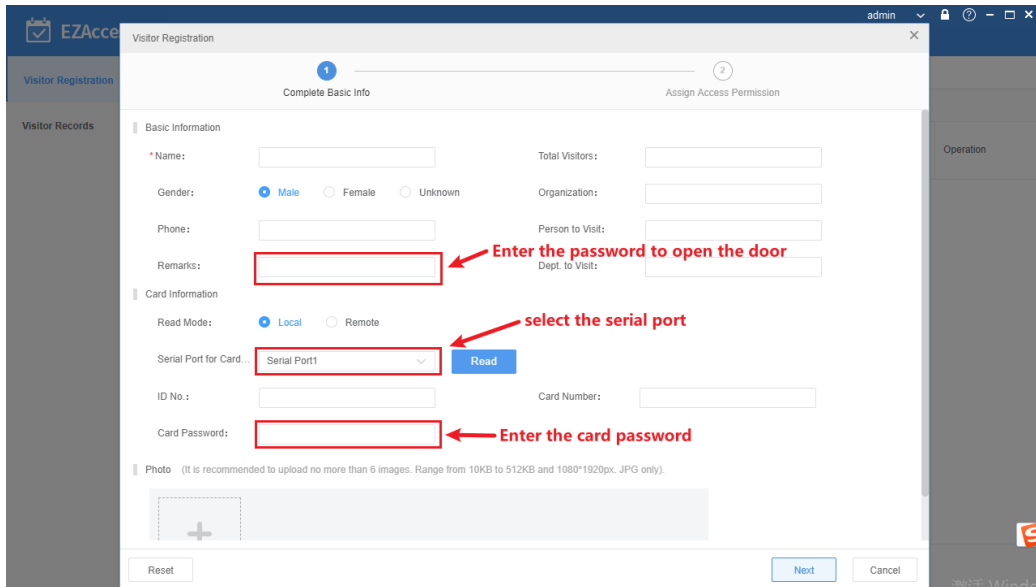
If you choose password, the door will be opened using a password.

If you choose card number, the door will be opened using a card.

If you choose card number + password, the door will be opened using card number and password.

Note: Cards can be added and assigned on the **Personnel management interface** only; not on other pages.

Figure 13 Add Card Passwords



5. Access permission

Go to **Access Control** > **Access Permissions** Click **Add Permissions**. In the window as shown below, enter the permission group name, choose doors you want to assign


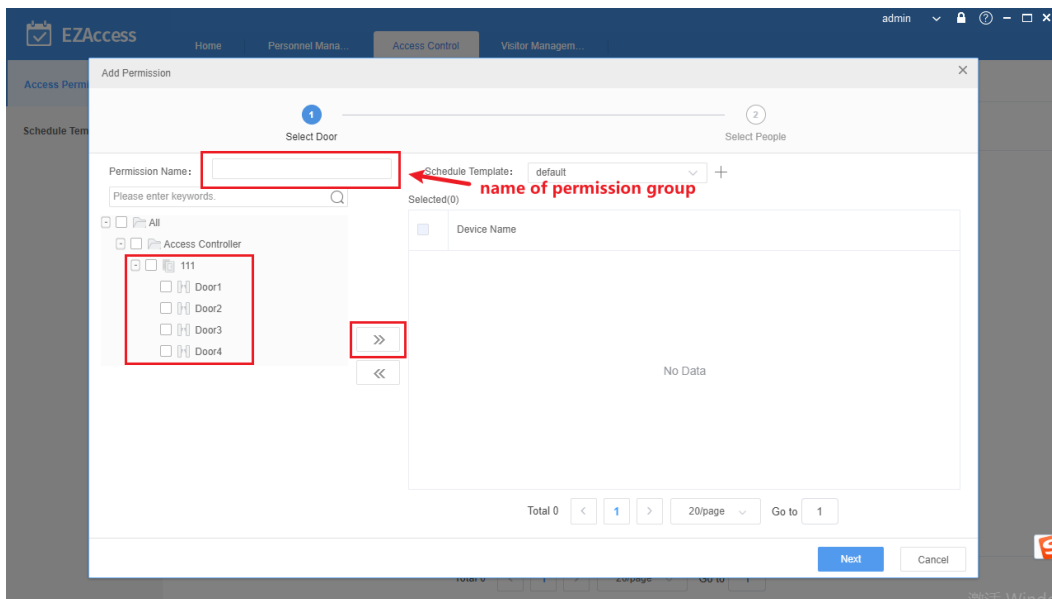
permissions, and then click .

Figure 14 Access Permission




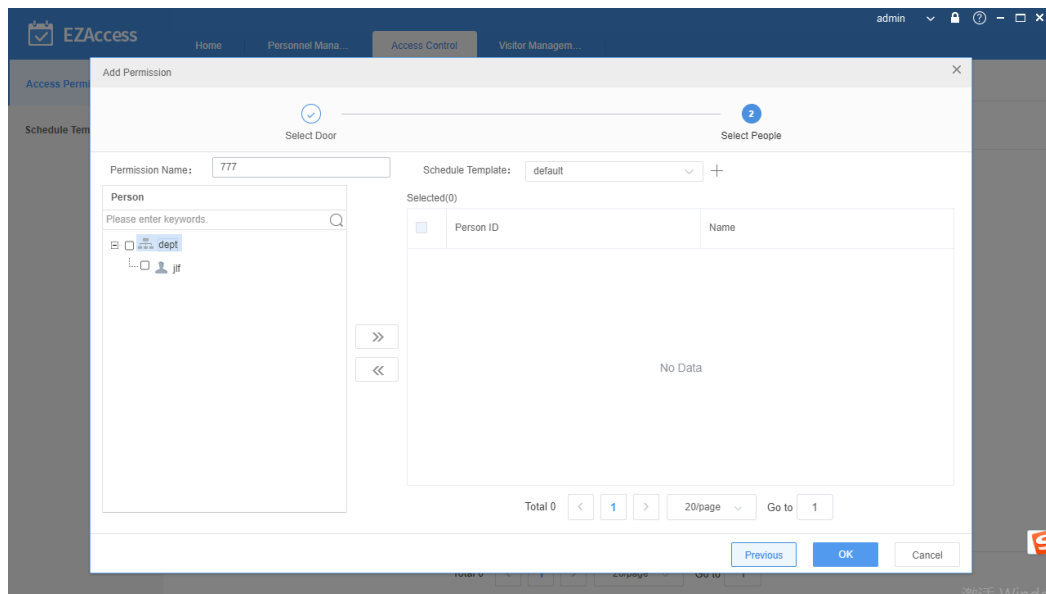
Click **Next**. Select persons you want to assign access permissions, click , and then click **Save**. The card numbers, passwords, and person info are sent to the controller, and during the specified time period, doors can be opened through the card reader on the controller during the specified period.

Figure 14 Assign Access Permissions

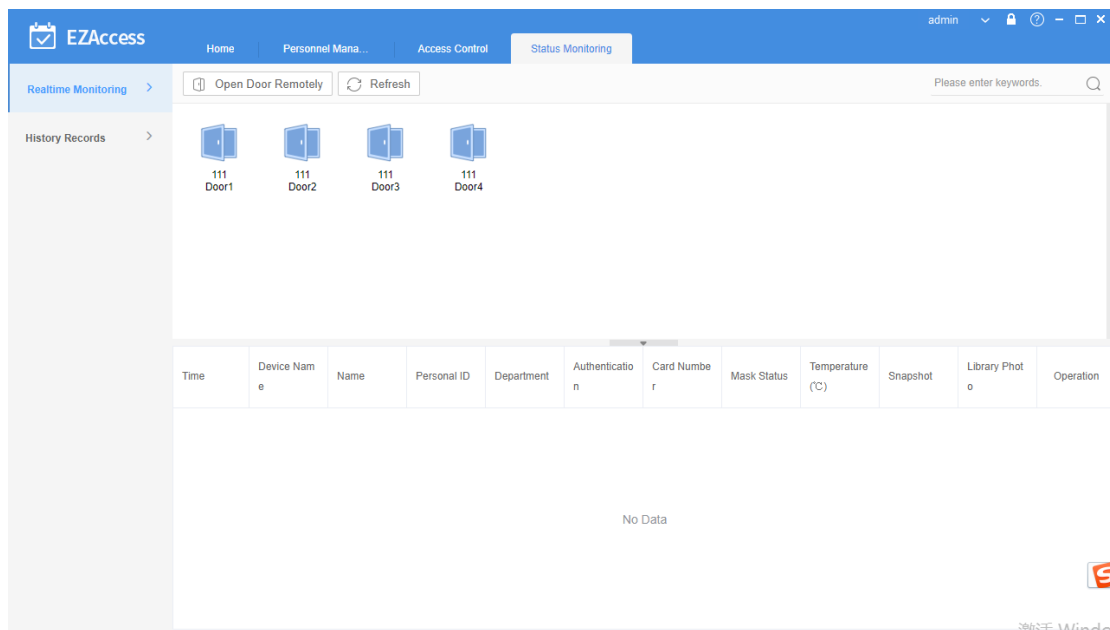


2.3 Pass-Thru Records

Click **Pass-Thru Records**. The **Real-time Records** page is displayed.

You can view real-time pass-thru records.

Figure 15 Real-time Records



The **History Pass-thru Records** page shows historical pass-thru records.

Figure 16 History Records

The screenshot shows the EZAccess web interface. The main content area is titled 'History Records' and displays a table with the following columns: Time, Device Name, Name, Personal ID, Department, Authentication, Card Number, Mask Status, Temperature (°C), Snapshot, Library Photo, and Operation. The table is currently empty, showing 'No Data'. The interface includes a search bar, filters for start and end time (2023-04-06 00:00 - 2023-04-06 23:59), access control device (SelectedDevice.1), and mask (All). There are buttons for 'Export', 'Sync Pass-Thru Records', 'Search', and 'Reset'. The bottom of the page shows pagination controls for 'Total 0' records, page 1 of 1, and 20 items per page.

Pass-thru records show different contents for staff members, visitors, and strangers.

- For staff members, three fields are displayed: name, person ID, and department.
- For visitors, only the visitor name field is displayed.
- For strangers, all the three fields are empty.